

**HABITAT
SERIES.**



**BUILT TO ENJOY THE
STORM**



THE HABITAT SERIES

The Habitat Series is a series of homes designed to be the highest house on the side of the mountain, the last house at the far end of the country road, the furthest house into the forest, the closest house to the sea and most importantly the warmest house in the storm.

This series of homes can be placed anywhere with road access.

The habitat not only looks amazing, it also encompasses the amazing strength and performance Shape is known for delivering. The Habitat is also ideal for earthquake zones, damaged land and sea spray zones. The structure is built from new modified shipping containers, and then coated in our high performing paint system which leaves the structure untouched in the most corrosive of zones.

The Habitat is built to near completion, then divided into 6m x 2.4m modules and transported on the back of flat deck trucks to the final location and lifted into place.

A snapshot of what the Habitat Series includes:

- Design, engineering and consent
- Build and travel insurance
- Transport, logistics, house to site connection
- New build, high cube shipping containers
- Tropic and high corrosion rated painted system, boasting a 25 year repaint guarantee
- Low pitch insulated roof system
- High performance spray foam insulation
- Double glazing throughout
- Choice of internal linings (painted plasterboard, MDF, ply)
- Friction based foundation (where possible)
- Flooring allowance
- Heat pump and mechanical ventilation
- Choice of hot water heating
- Designer kitchen allowance
- Fisher & Paykel hob, dish drawer and wall over
- LED lighting and PDL iconic switches and power outlets
- Shower, toilet and vanity

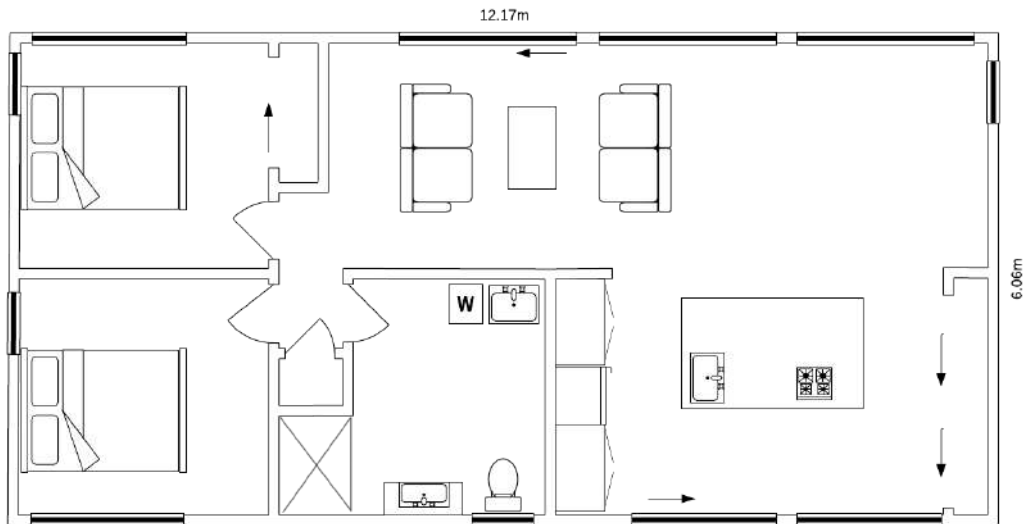
*We can also provide the Habitat completely furnished, right down to the tea towels



LIFE - 75sqm

The Life Habitat is a two-bedroom home constructed out of 5 x 20 ft containers. It is a functional open plan design.

The Life is an ideal solution for a rural setting, where bringing builders to your building site is not an option. Big enough for a small family, the Life offers comfort, strength and smart living for a remote setting.



PRICE

South Island \$330,000

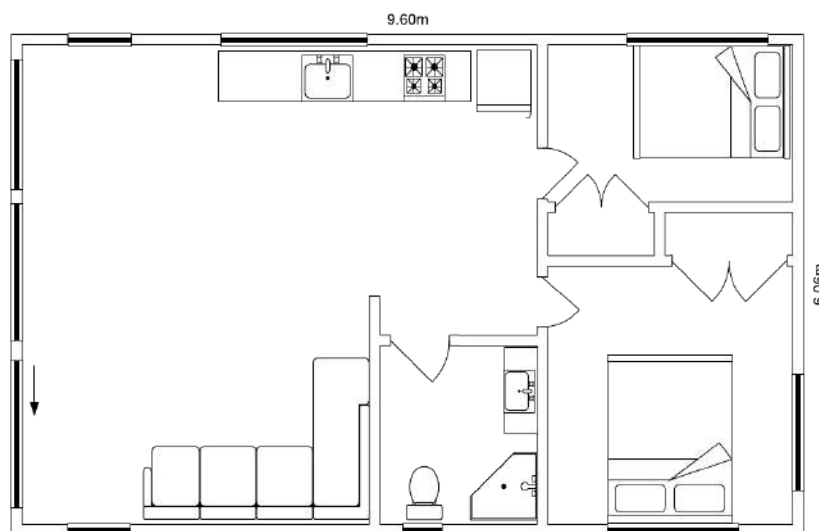
North Island \$350,000



SENSE - 60sqm

The Sense is your out of city escape - big enough to enjoy your own space, yet compact enough to fit onto challenging sites around New Zealand.

Constructed from 4 x 20ft containers means the entire house can be sent around the country on the back of two 12m flat deck trucks, largely reducing transport costs.



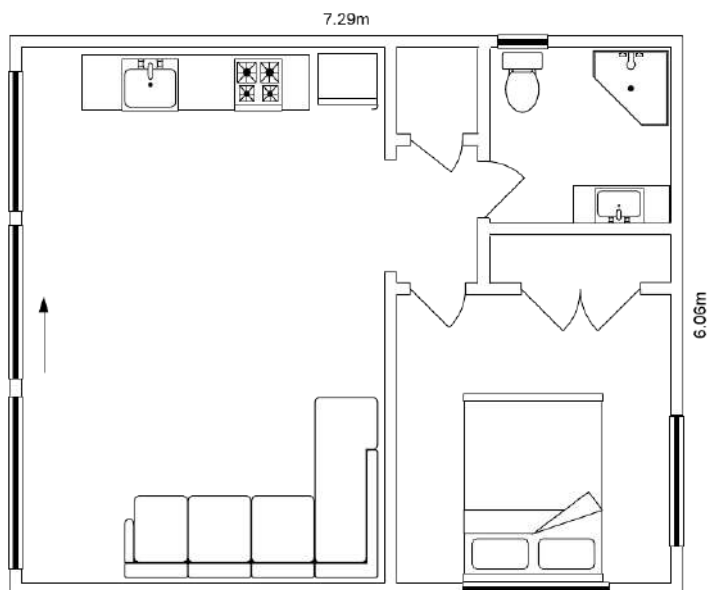
PRICE

South Island	\$270,000
North Island	\$285,000

EVOLVE - 45sqm

The Evolve is the ultimate weekend getaway, which can easily be converted to off grid if desired.

The Evolve is the solution to blocks of land previously deemed out of reach for a standard build. The Evolve will disappear into any natural surrounding being a remote bush block, a rugged stretch of beach or a high-country sheep station.



PRICE

South Island \$220,000

North Island \$235,000

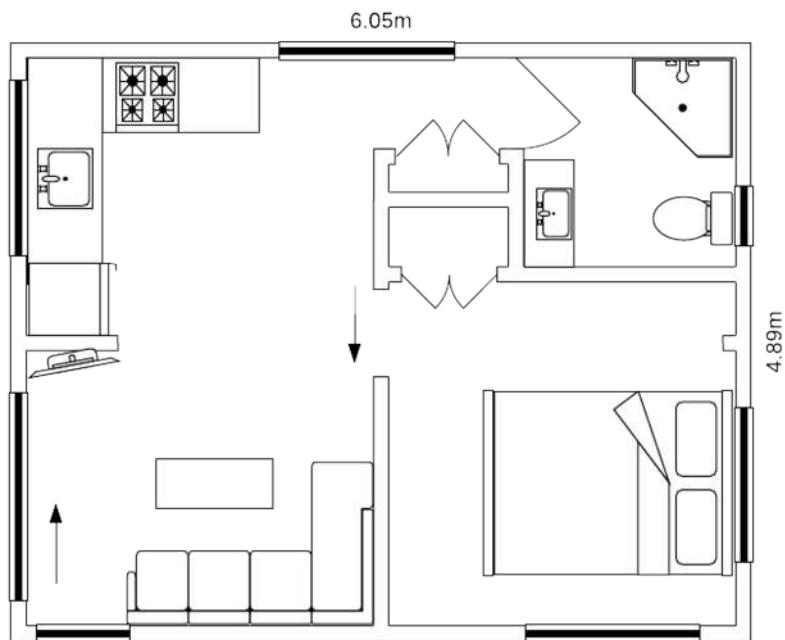


HORIZON - 30sqm

The Horizon is built from 2 x 20 ft containers and like the Evolve is an easy conversion to off grid living.

The Horizon fits into a back yard for some extra living space or can be dropped onto a distant plot of land to give accommodation while a bigger home is built.

Not only does the Horizon already incorporate all of the essentials to live a comfortable life, it is also possible to add future containers to increase the footprint.



PRICE

South Island	\$155,000
North Island	\$165,000

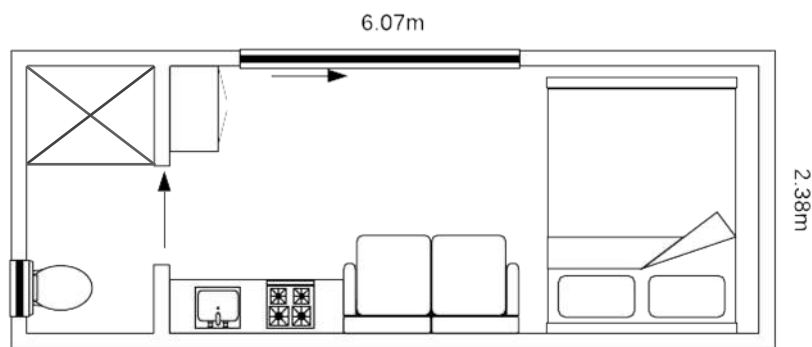


DAWN - 15sqm

The Dawn is our entry point to the Habitat series and is delivered ready to go.

The Dawn can be set up with a caravan plug or hard-wired depending on your requirements.

Built from a single 20ft container the Dawn has a single stage delivery and can be added to in the future.



PRICE

South Island	\$75,000
North Island	\$80,000

Shape Construction Ltd

9 Settlers Crescent, Ferrymead

Christchurch, NZ

www.shapeconstruction.co.nz

info@shapeconstruction.co.nz

03 3856788



**LICENSED
BUILDING
PRACTITIONERS**
Building confidence

SHAPECONSTRUCTION